

ROEBLING CHAPTER

Society for Industrial Archeology

July 2012 – Vol. 21 No. 1

BARBOUR FLAX SPINNING & DOLPHIN JUTE WORKS

On Saturday, January 28th we toured the Barbour Flax Spinning / Dolphin Jute Works complex located in the Great Falls Historic District. The 1880s mills are preserved and reused for a variety of light manufacturing purposes. Mr. David E. Garsia, Sr., and his son Mr. David Garsia, the owners of the complex, conducted the tour. They took us all through the mills, with ownership insight and entertaining commentary.

The Barbour family is one of the oldest and most notorious of Paterson's industrialist. Their linen thread and twine was produced as early as 1841. The family trade in thread manufacturing is traced back as far as 1739 to Scotland. In the 1860s the decision was made to expand to Paterson, the Barbours purchased the Passaic Paper mill #2 on Spruce St. from the Colt family. The two brothers, Thomas and William, expanded the business to other locations in Paterson and employed 440 workers. They married and made their homes in the city and established the mill-housing district known as "Little Dublin". Today



1896 Postcard advertisement.

it is referred to as "Little Lima" because of the large number of people from Peru.

Attendees at our Great Falls Symposium recognize the large brick chimney across the street. Look carefully and you will see the "D" on it, and that reveals the Dolphin Jute works of some 17 buildings. During the period of their operations from 1844 to 1869, they spun hemp into rope, initially and later produced jute carpeting. ■

ROYLE MACHINE WORKS DEMOLISHED

Unfortunately, another old historic facility in Paterson was demolished soon after we toured the Barbour and Dolphin Jute Mills. The John Royle Machine Works building was demolished in early February. Gianfranco Archimede, our Roebbling Chapter member and Director of the Historic Preservation Commission of the City of Paterson, lamented its loss in part due to being north and

Continued on page 2.

SAVE THE DATE FOR THE NEXT TOUR

HISTORIC SPEEDWELL

Birthplace of the Telegraph

Sunday, August 12, 2012

Tour at 10: 30 a.m.

Speedwell is the, 7.5 acre, estate of ironmaster Stephen Vail. It was here that Stephen's son Alfred and Samuel Morse worked to perfect and first demonstrated the electromagnetic telegraph. Our world of cell phones and electronic communication started here. Although Morse got the credit, it was Alfred who turned what

Continued on page 3.

FOR THE LATEST ON UPCOMING EVENTS

WATCH THE ROEBLING CHAPTER WEB SITE FOR DETAILS

roebblingsia.org

ROYLE MACHINE WORKS DEMOLISHED

Continued from page 1.

outside the Great Falls Historic District. Like founders of other Paterson companies, John Royle brought his talents from England to manufacture complex routing machines. The Passaic County Historian, Ed Smyk, wrote a spirited letter to the Herald News lamenting the loss of Royle and all that it means. See Mr. Smyk's letter below:

According to what I've read in the Herald News, it seems inevitable that the John Royle Machine Works building will, in the chilling words of preservationist Carl Feiss, soon be entered on the "roster of our architectural dead." In recent letters, colleagues Nick Sunday and Glen Corbett expressed themselves well on the continuing assault on Paterson's ever-diminishing industrial heritage. The Royle building did not have to encounter what in all likelihood will be a fatal rendezvous with demolition experts.

In order for preservation efforts to take root and flourish, they must be considered not just desirable, but for want of a better term, a state of mind. They succeed when the community is vitally engaged, when people who live in a town or city take pride in their history, and exert a sense of ownership over their heritage. The inability to do otherwise results in the kind of narrow parochialism that consigns buildings like the Royle Works to neglect and obliteration.



ABOVE: The Royle factory in the 1890s.
RIGHT: The Royle sign just before demolition.




To me, the piles of broken bricks and jagged mortar heaped about the Royle site represent more than just debris waiting to be carted off to some distant landfill. They are the shattered remnants of the dreams and ambitions of generations of mill workers. John Royle, the company's founder, came here from England as a lad of eight.

In 1955, a company historian said that Royle's "sturdy heritage of thrift, integrity, ingenuity and individuality stood him in good stead." The future industrialist's supple, mechanically oriented talents bore fruit. Royle specialized in building complicated routing machines.

Royle lived to the wise age of 86 and no doubt looked back with serene, confident satisfaction as his fledgling enterprise expanded to employ nearly 100 workers. He was more than just a manufacturer. He provided sustenance to breadwinners and their families.

The ignominious end of the John Royle Machine Works building severs another link with the Silk City's storied past, and with



The
**GREAT FALLS
SYMPOSIUM**

EARLY
NOVEMBER, 2012
9:30 A.M. to 5:00 P.M.
Date to be Announced

The Roebling Chapter of the Society for Industrial Archeology

it, a tangible reminder of what an English immigrant could do with guts and drive, for himself, and for the operatives he employed.

E. A. Smyk ■

IMPORTANT NOTICE

WE NEED YOUR E-MAIL ADDRESS

Beginning in 2013, the newsletters will be distributed only by e-mail. **Don't be left out!** Be sure we have your e-mail address. With this new system we will be able to send you newsletters in a more timely and cost-effective manner. In addition you will receive tour announcements and news of IA events from all over the metropolitan area. We will continue to mail the newsletter to all our members through 2012. To make this work we need your help. Please send your e-mail address to rcsiaprez@aol.com.

HISTORIC SPEEDWELL TOUR

Continued from page 1.

started as a Rube Goldberg contraction into a working invention.

On the tour we will see a brand new, award winning, video in the visitors center, then visit the Factory to see two floors of, newly installed, state-of-the-art exhibits. At the mansion house we will see how the Vail family lived and at the ironwork exhibit we will learn about their business.

Although the Speedwell Iron Works was nationally known for the quality of its work, it was only one of the

Continued on page 4.



This interactive exhibit allows you to help out as Vail and Morse work on the telegraph.

NEW JERSEY EVENTS

INDUSTRIAL HERITAGE WALK

Easton & Phillipsburg

Canals, Coal & Iron

Sunday, August 4

Andover

Iron, Tramways & Railroads

Saturday, September 15

Waterloo

Iron, Tramways & Railroads

Saturday, October 13

Morris Canal in Passaic County

Sunday, November 4

For information or to sign up for a walk please e-mail: macgraphics1@verizon.net

WATERLOO HERITAGE DAYS

July 14 & 28 Aug 11 & 25

Sept 8 & 22 Oct 13 & 27

Waterloo is a preserved Morris Canal town with a long industrial and transportation history, located just off I-80 in Sussex County New Jersey.

Heritage Days offer a wide range of activities including:

- Operating Gristmill (**New this Year**)
- Boat Rides on the Canal
- Canal Walking Tours
- Canal Museum
- Smith Canal Store
- Blacksmith Shop
- Rutan Cabin
- Exhibits
 - Canal History & Technology
 - Canals of New Jersey

– FREE ADMISSION –

For more information and directions please e-mail:

macgraphics1@verizon.net

Continued from page 3.

many water powered industries in the Morristown area. In the afternoon we will do a short driving tour of a the few nearby sites.

Historic Speedwell is located at 333 Speedwell Avenue in Morristown, New Jersey. If you would like to attend this tour please send a quick e-mail to Joe Macasek at macgraphics1@verizon.net. I will send back a map with direction. If you would like to use public transportation, NJTransit train service is available from Penn Station. There will be a \$5.00 group discounted admission fee. ■

Roebing Chapter SIA Officers

President	Jim Mackin
Vice President	Joe Macasek
Treasurer	Kevin Pegram
Secretary	Aron Eisenpress

You can contact the Roebing Chapter by E-mail at:
RCSIAprez@aol.com

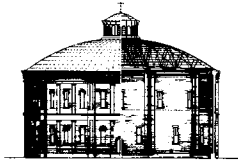
Membership is \$20.00 per year, payable to RCSIA, c/o Aron Eisenpress, 235 West End Avenue, Apt. 14-C, New York, NY 10023. A downloadable chapter membership form and general information about the SIA are available at www.siahq.org.

UPCOMING EVENTS – 2012

August 12	Historic Speedwell Tour
September 9	Annual Corn Roast
October 18 – 21	National SIA Fall Tour Utica New York
November	The Great Falls Symposium

Design: Joe Macasek, MacGraphics

AN OFFICIAL CHAPTER OF THE
SOCIETY FOR INDUSTRIAL
ARCHEOLOGY



ROEBLING CHAPTER NEWSLETTER is published four times per year by the Roebing Chapter, Society for Industrial Archeology, c/o Jim Mackin, 370 Riverside Drive #2B, New York, NY 10025, e-mail: RCSIAprez@aol.com.