

ROEBLING CHAPTER

Society for Industrial Archeology

October 2014 – Vol. 23 No.2

GREAT FALLS SYMPOSIUM – 2014

The Roebbling Chapter, Society for Industrial Archeology, presents the 34th annual Great Falls Symposium on Industrial Archaeology topics of the NY-NJ Area on Saturday, October 18th, 10 am-5 pm, at the Rogers Locomotive Works Storage Building, located behind 32 Spruce Street in Paterson, NJ. Please join us for the paper presentations, lunch, annual presentation of the John A. Roebbling Award, and a photography exhibition reception at the Paterson Museum from 9 pm - 6 pm.

Last year's symposium was the first to be held at the Rogers Storage Building, after several years of anticipation while the building was being remodeled. The results of the LEED rehabilitation are outstanding and appreciated by all who attended. Over the past year, the venue was improved again with the installation of wall-mounted screens, a ceiling-mounted projector and a permanent sound/public address system. We are already looking forward to 2015 when we might see addi-



The luxury passenger liner SS United States, built in 1952 and designed to capture the trans-Atlantic speed record.

tional improvements, such as light control shades for the skylights and windows.

Please join us on October 18th for another round of excellent presentations on diverse topics of local as well as international interest. This year's presentations include inspirations for our region from Germany's renowned Ruhr Valley Industrial Heritage Route as well as the Derwent Valley in England, Paterson history about Silk City Diners and the Allied Textile Printing site, presentations on historic maritime and vessel preservation – the ocean liner SS United States and the whaling ship Charles W. Morgan – a rediscovery of the site where excavations for NYC's subway system began, more on the Morris Canal Greenway, as well as an update on the Great Falls National Historical Park from the Superintendent. Excerpts from two films are also featured: a rare film from the 1970s produced by the SIA called "Working Places: What Can You Do With Paterson's Old Industri-



The Great Falls of the Passaic in Paterson, N.J.

Continued on page 3

FOR THE LATEST ON UPCOMING EVENTS

WATCH THE ROEBLING CHAPTER WEB SITE FOR DETAILS – www.roeblingsia.org



UPCOMING TOURS

FALL SCHEDULE – 2014

October 4

– Iron Mines & West Point Foundry

This will be a two-part, full-day tour starting in Fahnestock State Park with a visit to two of the mines that supplied the West Point Foundry's Cold Spring furnace. In the afternoon we will tour the WPF Preserve with a representative from Scenic Hudson, owners of the site, to see and hear about recent restoration work and plans for the site's future.

October 11

– Waterloo Inclined Plane

Sponsored by Industrial Heritage Tours

On this tour we will visit one of the best preserved Morris Canal inclined planes, look for artifacts at the site of the Waterloo ore dock, walk along the route of the Sussex Branch Railroad, and find the site of the massive ice houses that once stood along the south shore of Waterloo Lake.

November 1

– Chester Furnace

Sponsored by Industrial Heritage Tours

In the late 1860s the building of the Central Railroad of New Jersey's High Bridge Branch gave Morris County iron mines access to growing markets in Pennsylvania's Lehigh Valley. Chester was one of the areas that, for a short 20-year period, enjoyed a rush of industrial activity. The high point of this prosperity was marked by the building of the Chester Furnace, a state-of-the-art complex that often out-produced many of its neighbors. On this walk, we explore the furnace site, walk railroad rights-of-way, and visit the nearby Hedges Mine site.

Most of these tours involve walking over uneven terrain and off-trail exploration. Please wear sturdy, and bring a snack and something to drink.

For Information & reservations, please e-mail:
macgraphics1@verizon.net
or call 973-292-2755

SS UNITED STATES

This year marks the 62nd anniversary of the record-breaking maiden voyage of the *SS United States*, for which she still holds the Blue Riband for record-breaking speed. Her success showed the world what American engineering and innovation could do on the high seas. She crossed the Atlantic with an average speed of 35.59 knots or more than 44 miles per hour with throttles still not fully opened. A top-secret Pentagon project, her flawless 17-year transatlantic service career ended with the onset of faster jet airline service. She was retired in 1969 while at Newport News for annual overhaul. Owned successively by several maritime companies after being mothballed, her last owner sold the ship to SS United States Conservancy in 2011. The recently formed New Jersey Chapter of the Conservancy seeks to convert the ship into a stationary waterfront mix-used development and museum complex. Their presentation at the upcoming Great Falls Symposium will detail the ship's history and the plans for her future. ■

GREAT FALLS SYMPOSIUM

Continued from page 1

al Buildings?" and "SS United States: Lady in Waiting." Several of the presenters are authors and will have their books for sale, as well as the usual vendors of books, post cards, journals and other collectables. Finally, after the symposium, you are invited to stop by a reception at the Paterson Museum for "The Iron Hand in the Silk Glove: Paterson's Allied Textile Printing Site," an exhibition of large-format silver photography by Gianfranco Archimede. For more information about the exhibit, visit: www.garchimede.com.

Please see the enclosed flyer for all pertinent information about the symposium, registration, and directions to Paterson. Feel free to email any questions to Gianfranco Archimede, garchime@yahoo.com

We are looking forward to seeing you in Paterson on October 18th! ■

ON TOUR WITH THE ROEBLING CHAPTER

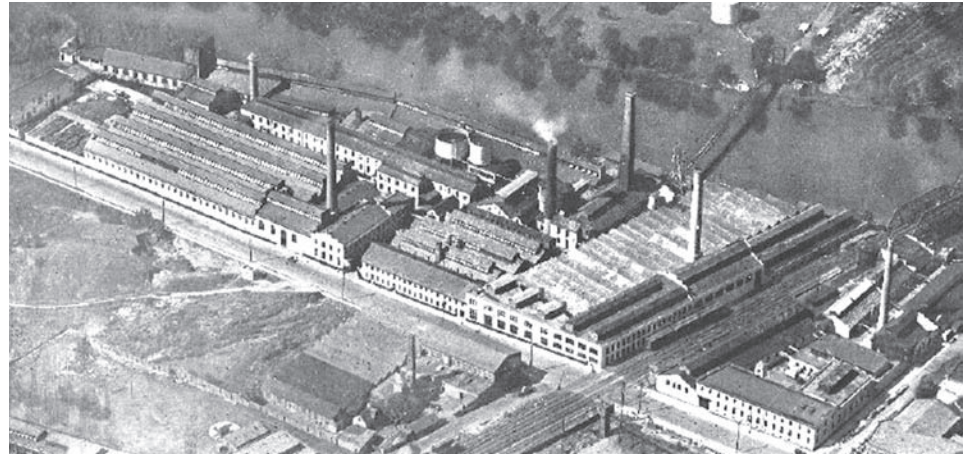
This year's schedule began last April with a full-day tour of Princeton, New Jersey and the nearby Princeton Plasma Physics Laboratory, planned and led by RCSIA member John Gillham. The tour size was limited by the number that could be accommodated at the PPPL. As soon as the tour flyer went out, members began e-mailing reservations. By the next morning the tour was full.

We began with a morning tour through Princeton stopping to visit sites associated with such names as Albert Einstein and Paul Robson, followed by a walk through Princeton University. In the afternoon, we drove the PPPL where we talked with the engineers and physicists, saw experiments in progress, and sat in the project's control room. In the late afternoon, the group attended a lecture at PPPL by RCSIA member Clifford Zink titled *The Role of Trenton Iron and Steel in Shaping America*.

In June, RCSIA member Gianfranco Archimede led a Paterson Mills bus tour. Again, the response was overwhelming. Members e-mailed enough reservation to fill two busses almost immediately.

Unlike the Paterson mill district tours that we have done in the past, Gianfranco took us to distant corners of the city to visit a wide range of mill sites that supported industries as diverse as silk dyeing and aircraft engine manufacturing. Between stops, Gianfranco provided an in-depth overview of Paterson's industrial history and future challenges.

Later in June Mary Habstritt and Alison Greenburg teamed up to of-



An aerial views of the Weidmann Silk Dyeing Work in its heyday in the early 1900s.

fer a tour of the lighthouse tender *Lilac* and Manhattan's Tribeca neighborhood.

In July chapter president Joe Macasek and board member Bierce Riley led a tour of the grounds at Greystone Park, the former New Jersey Asylum for the Insane at Morristown. This walk offered a look at the infasturcure that kept the hospital running and what may be a last chance to admire the magnificent second empire Kirkbride building that is now slated for demolition. ■



On the Princeton tour, John Gillham lead the group through the Nassau Inn to see Norman Rockwell's Yankee Doodle mural. ■

DON'T BE LEFT OUT!!

Because several of this year's tours were booked up well in advance, we encourage members to sign up early for future trips. Unfortunately many of the interesting places we like to take you will just not accommodate a large crowd. To help assure that everyone has an opportunity to attend, we will try to get future tour lists out early and we will repeat the tours that are most popular. The most efficient way to keep up with what's going on is to be sure that we have your current e-mail address. You can also check the events page of the RCSIA web site at: <http://roebing-sia.org/events.html>. If you are not receiving regular e-mail messages about tours and event please contract Aron Eisenpress at: RCSIA.Sec@verizon.net to update your contact information. If you are getting chapter e-mails, you can use the self-service link found at the bottom of evert e-mails "Update Profile/Email Address" to update your contact information. ■

The Iron Hand in the Silk Glove

The Rise & Demise of Industry in Paterson, NJ

Allied Textile Printing Site

Traditional B&W photography by Gianfranco Archimede,
Paterson Museum – September 29 - October 31, 2014

Artist's Reception and Presentation on Saturday,
October 18th after the Great Falls Symposium from 6-9 pm.



Roebling Chapter SIA Officers

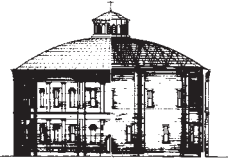
President	Joe Macasek
Vice President	Sandy Needham
Treasurer	Kevin Pegram
Secretary	Aron Eisenpress
Newsletter Editor	Bierce Riley

You can contact the Roebling Chapter by E-mail at:
macgraphics1@verizon.net

Membership is \$20.00 per year, payable to RCSIA, c/o
Aron Eisenpress, 235 West End Avenue, Apt. 14-C, New
York, NY 10023. A downloadable chapter membership
form and general information about the SIA are available at
www.roeblingsia.org.

Design: Joe Macasek, MacGraphics

AN OFFICIAL CHAPTER OF THE
SOCIETY FOR INDUSTRIAL
ARCHEOLOGY



ROEBLING CHAPTER NEWSLETTER is published four times per year by the Roebling Chapter, Society for Industrial Archeology, c/o Joe Macasek, 19 Budd Street, Morristown, NJ 07960, e-mail: macgraphics1@verizon.net.